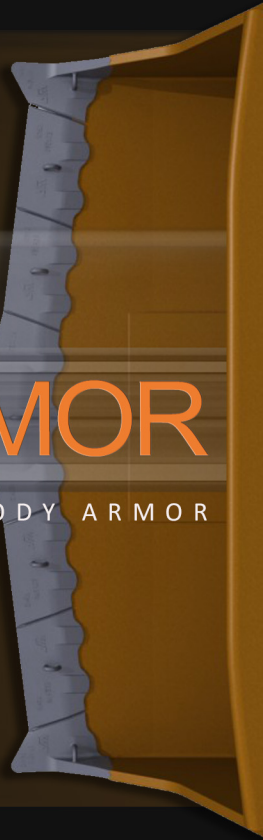




BLADE ARMOR







UNDERGROUND WELD-ON BLADE BODY ARMOR








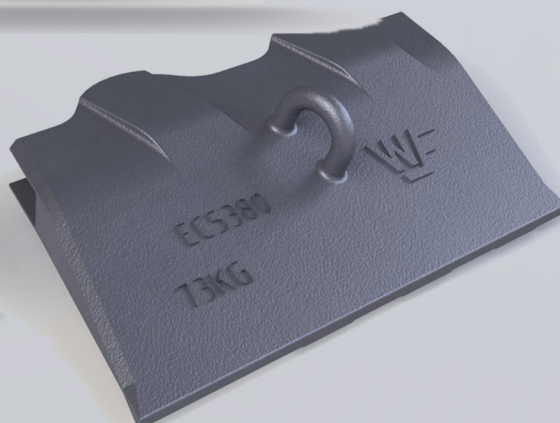
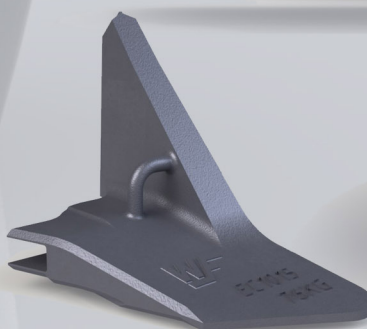
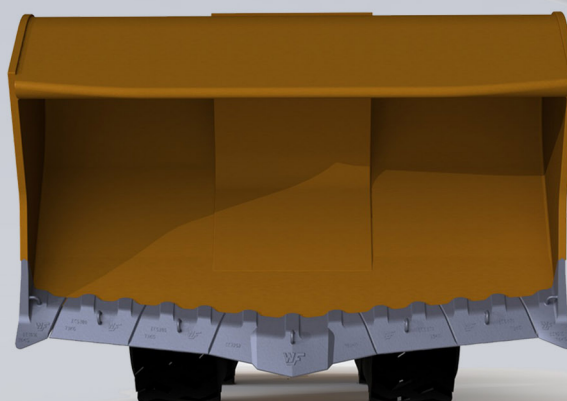
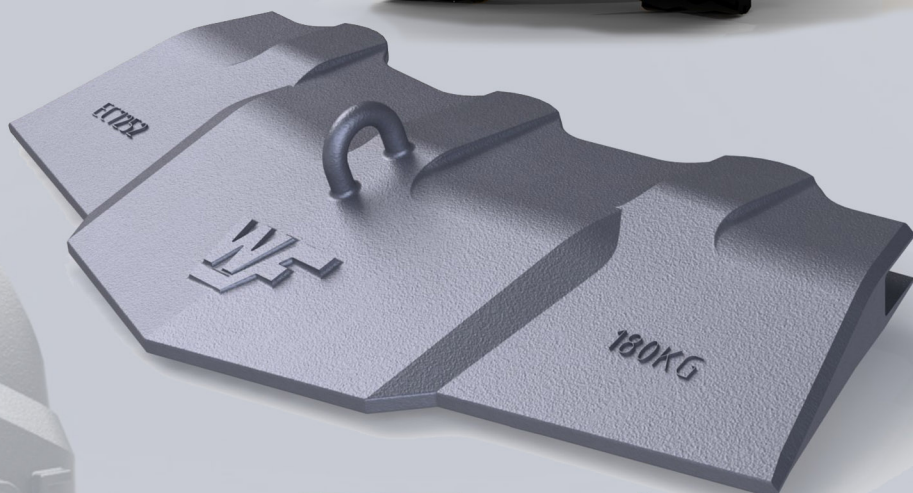
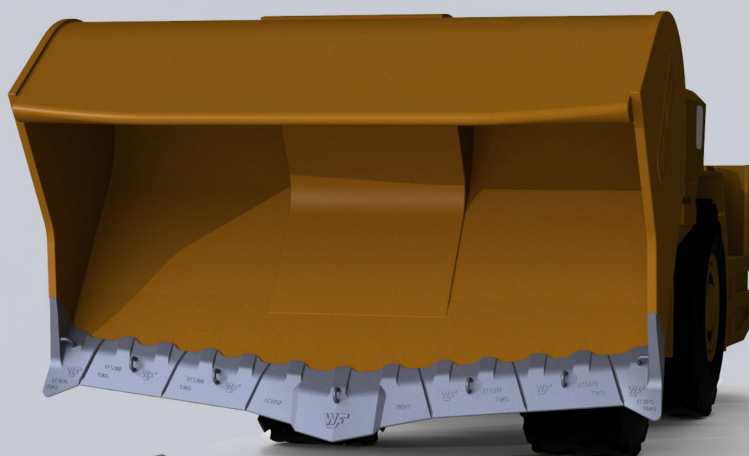
Design features

Shroud design

-  Penetrative profile to improve load cycle times and reduce machine consumption.
-  Designed to last longer and stay sharper throughout working life.
-  Integrated blade fitting area that allows for easy fitting and welding procedures.
-  Range of shrouds to accommodate most bucket configurations.
-  Penetrative corner and central profiles to aid penetration.
-  Lifting lug to provide safe manipulation for the installer.

Steel quality

-  Steel has been optimised to provide maximum abrasion resistance combined with maximum toughness to withstand high impact service conditions
-  Wear slower thus last longer.
-  Withstand heavy impacts, static loads and repetitive stresses that can cause fatigue and breakages.





Product range

Part Reference	Image	Description	Weight (lb)	Weight (kg)
EC7252		CENTER SHROUD WITH TOOTH PROFILE	373	169
EC5370		LEFT HAND INTERMEDIATE SHROUD	150	68
EC5380		RIGHT HAND INTERMEDIATE LIP SHROUD	150	68
Left hand shown, right opposite				
EC1015		LEFT HAND CORNER LIP SHROUD	158	72
EC1016		RIGHT HAND CORNER LIP SHROUD	158	72
Right hand shown, left opposite				

If you are looking for a mechanically attached equivalent please checkout FastLock



complete bucket protection solution for LHD underground mining machines

www.wearforce.com.au