



UNDERGROUND WELD-ON BLADE BODY ARMOR

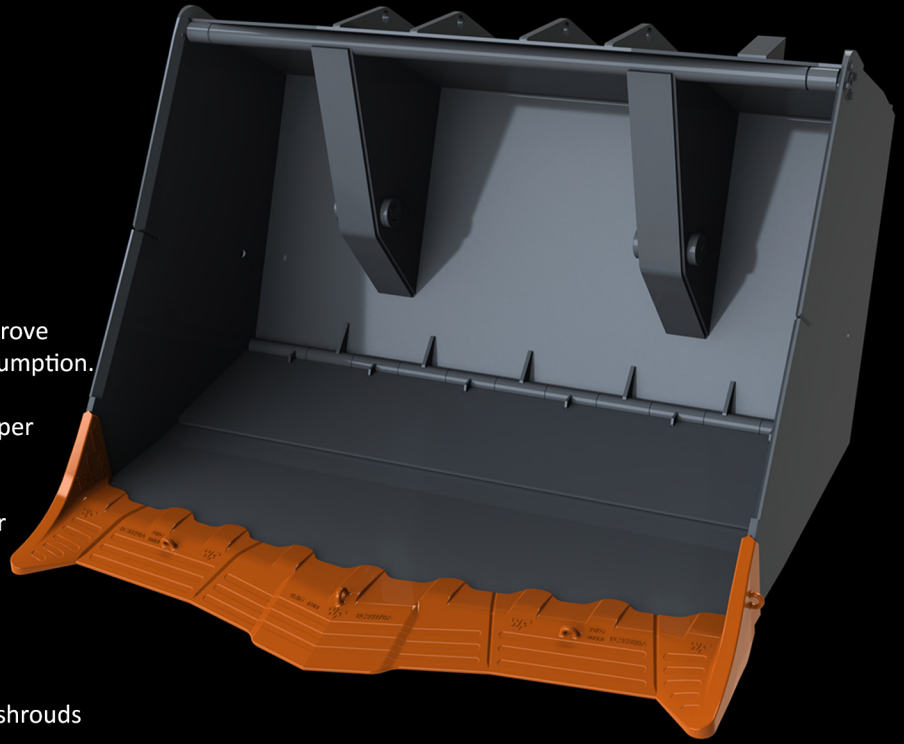
*STAYS SHARPER
LASTS LONGER*

DIGS BETTER

Design features

Shroud design

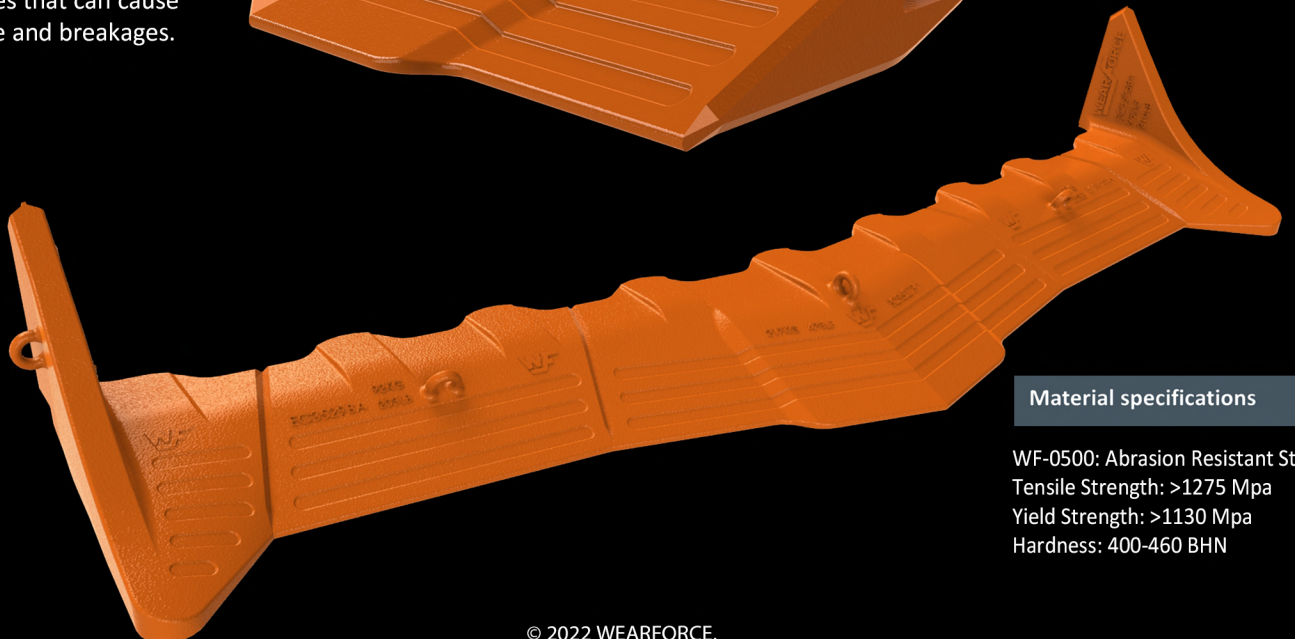
- Extra penetrative integrated profile to improve load cycle times and reduce machine consumption.
- Designed to last even longer and stay sharper throughout working life.
- Integrated blade fitting area that allows for easy fitting and welding procedures.
- Range of shrouds to accommodate most bucket configurations.
- Extra long and specially reinforced corner shrouds
- Lifting lug to provide safe manipulation for the installer.
- Overlay slots allowing option of hard-facing.



BLADE ARMOR II

Steel quality

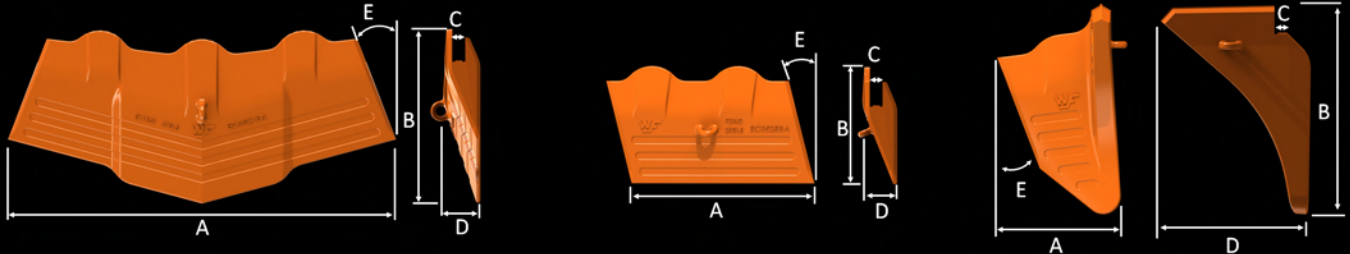
- Optimised Steel to provide maximum abrasion resistance combined with maximum toughness to withstand high impact service conditions
- Easy to weld.
- Withstands heavy impacts, static loads and repetitive stresses that can cause fatigue and breakages.



Material specifications

WF-0500: Abrasion Resistant Steel
Tensile Strength: >1275 Mpa
Yield Strength: >1130 Mpa
Hardness: 400-460 BHN

Product range

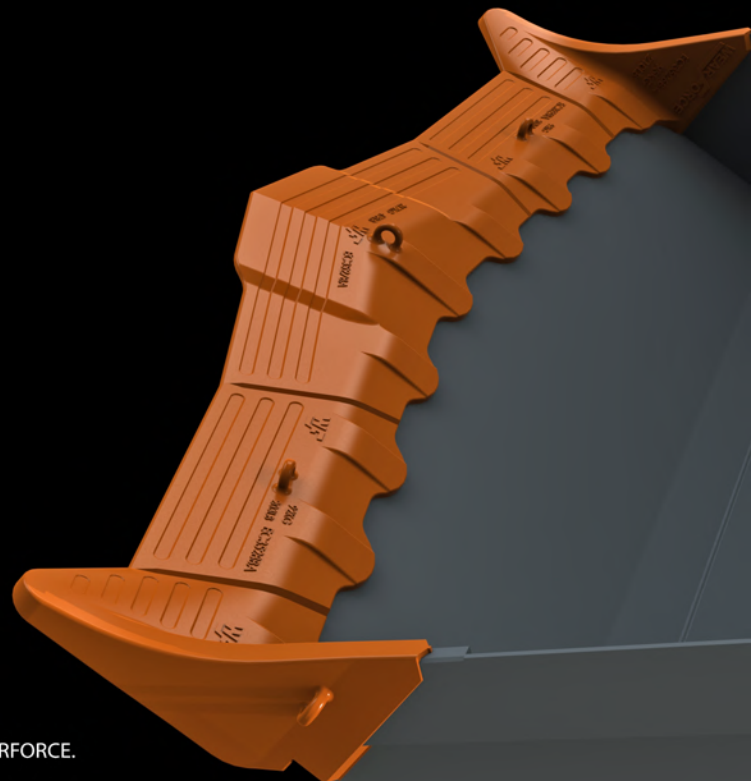


Product Code	Description	Weight	A	B	C	D	E
EC3525BA	R/H Corner (facing bucket)	95kg 209lbs	355mm 13.98"	604mm 23.78"	40mm 1.5748"	434mm 17.09"	21°
EC3526BA	L/H Corner (facing bucket)	95kg 209lbs	355mm 13.98"	604mm 23.78"	40mm 1.5748"	434mm 17.09"	21°
EC3528BA	L/H Transition (facing bucket)	92kg 203lbs	590.5mm 23.25"	380mm 14.97"	40mm 1.5748"	113mm 4.45"	21°
EC3529BA	R/H Transition (facing bucket)	92kg 203lbs	590.5mm 23.25"	380mm 14.97"	40mm 1.5748"	113mm 4.45"	21°
BA3527BA	Centre shroud	217kg 478lbs	1227mm 48.31"	548mm 21.58"	40mm 1.5748"	117.5mm 4.63"	21°

Lip considerations

Designed for a 40mm 7° delta lip

Lip layout drawing service available.

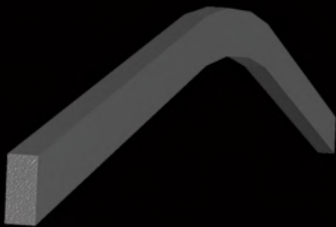


Complementary products - Full Bucket protection



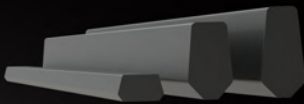
Heelblocks, Gussets + more

We have a range of heelblocks and additional castings especially designed for LHD machines, which protect the under edges, top corners and internals from wear and impacts.



Wearstrips and profile bars

With onsite cutting facilities, we recommend that our customers use C4800 or C8000 - an advanced high resistant performance steel with better wear properties than conventional Q&T plate - for all profile bars and strips to protect their buckets and extend shroud wear-life.



Grouser Bars

We stock a range of grouser bars to protect bucket cheeks and critical areas from wear that do not disrupt the in and outward flow of material.

Wearplate

Cut and rolled to your requirements, we can supply you with wear skins for your buckets manufactured from QT450 grade plate or similar.

Head office - Australia
Address 533 Abernethy Road,
Kewdale, Western Australia 6105
Tel +61 (0) 8 9353 6111
Fax +61 (0) 8 9353 6188
Email sales@wearforce.com.au

www.wearforce.com.au

Kalgoorlie Branch- Australia
Address 5 Hudson Place, West
Kalgoorlie, Western Australia, 6430
Tel +61 (0) 8 9022 8035
Fax +61 (0) 8 9022 8032
Email sales@wearforce.com.au

www.wearforce.com.au

North American Office
Address 359 New St,
Quakertown, PA 18951, USA
Tel +1 (215) 996 1770
Fax +1 (215) 822 1423
Email sales@wearforcena.com

www.wearforcena.com